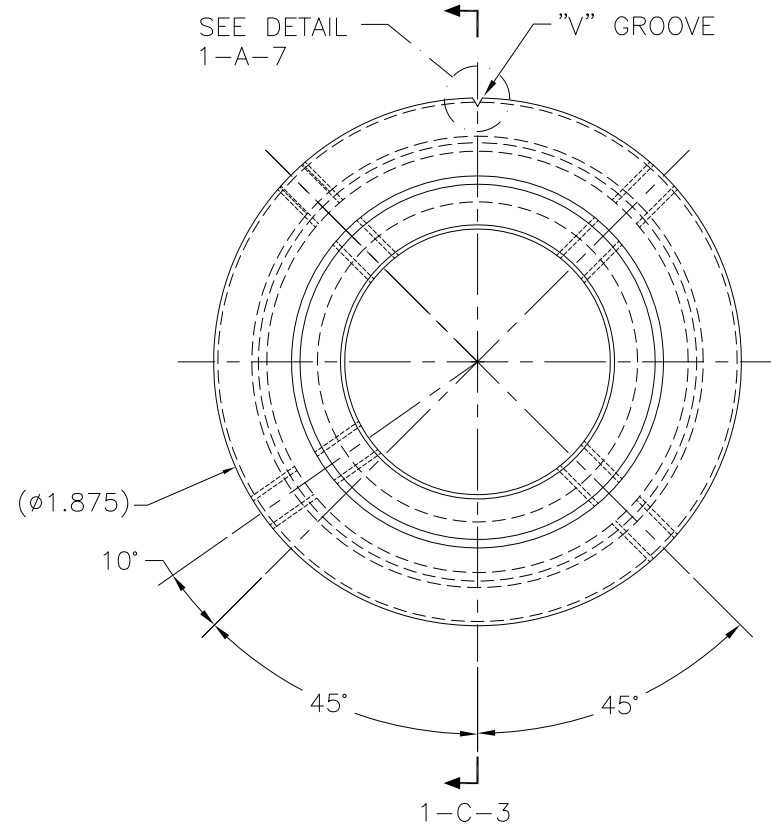


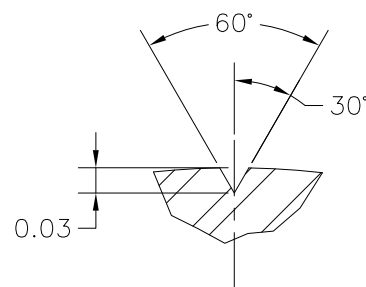
REVISIONS				
NO	DESCRIPTION	DATE	BY	APR/DATE
0	ISSUED FOR MANUFACTURE	2/21/11		
1	ADDED HOLE LOCATION, BORE FINISH AND NOTE 5	4/7/11		

NOTES:

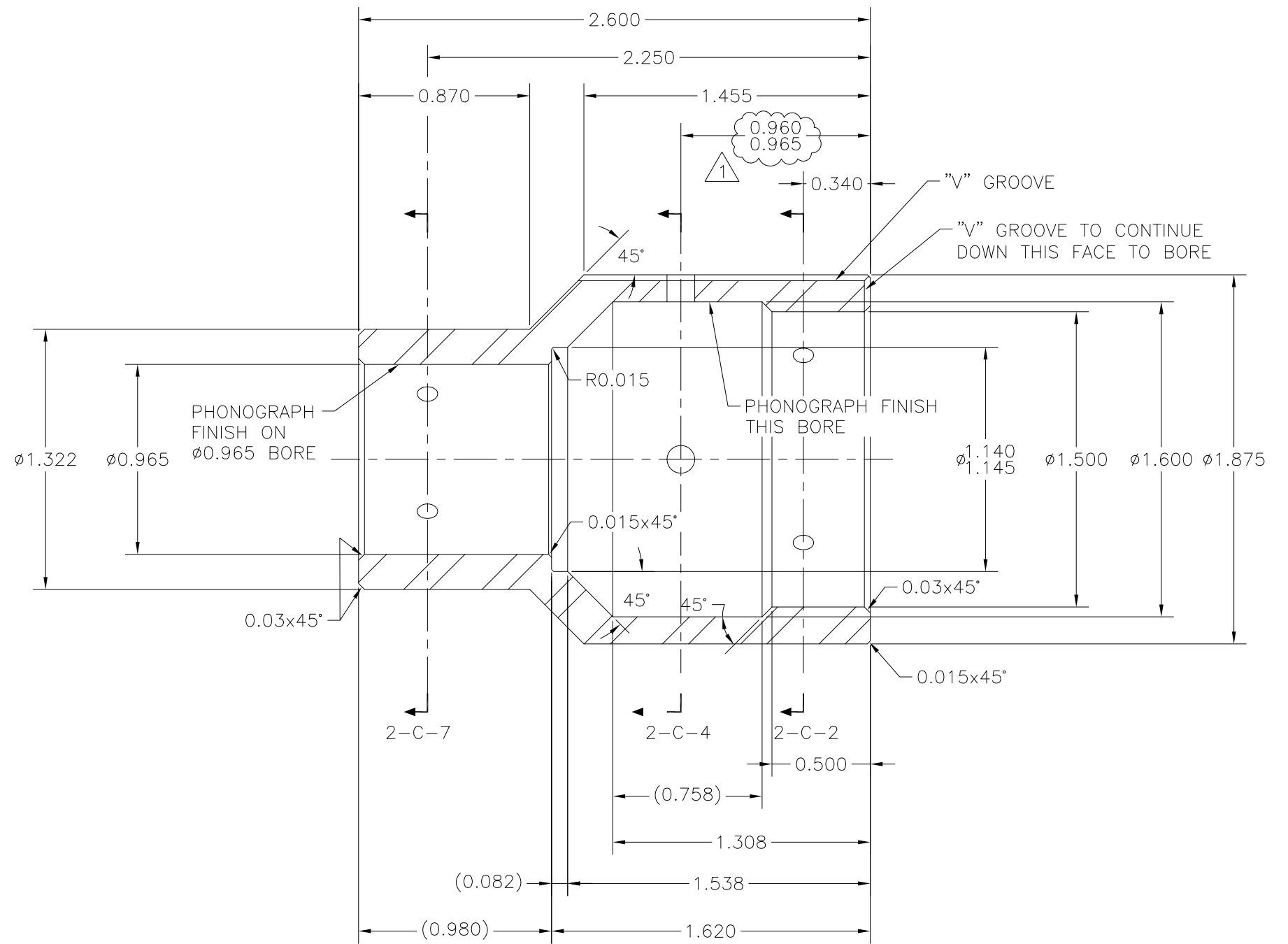
1. MATERIAL: 316 OR 321 STAINLESS STEEL
2. HEAT TREAT: NONE
3. SURFACE TREATMENT: NONE
4. WEIGHT: 0.60 LBS.
5. AFTER MACHINING, PLUG THREADED HOLES WITH TEMPORARY SCREWS, DEGREASE, AND SAND BLAST ALL I.D. SURFACES TO ACHIEVE ROUGH FINISH FOR BETTER EPOXY BONDING. SEAL FINISH PART IN PLASTIC OR ZIP LOCK BAG TO AVOID GREASE OR OIL CONTAMINATION DURING HANDLING AND DELIVERY.



END VIEW 1-C-7
CONNECTOR POTTING CARTRIDGE



END VIEW 1-A-7
REF. 1-C-7



SECTION 1-C-3
REF. 1-B-7

TOLERANCES: UNLESS OTHERWISE SPECIFIED 0.X ± 0.030 0.XX ± 0.010 0.XXX ± 0.005 ANGLES ± 1/2° BREAK EDGES 0.015 x 45° MIN. FINISH 125 ✓ [0.010]A ALL DIMS ARE IN INCHES, UNLESS NOTED OTHERWISE.	PROPRIETARY NOTICE THIS DRAWING AND THE INFORMATION IT CONTAINS ARE CONSIDERED CONFIDENTIAL, AND MAY NOT BE REPRODUCED, COPIED OR USED, IN PART OR IN WHOLE, WITHOUT PRIOR WRITTEN CONSENT.	Integrated Ocean Drilling Program TEXAS A&M UNIVERSITY 1000 DISCOVERY DRIVE COLLEGE STATION, TX 77845	
		TITLE CONNECTOR POTTING CARTRIDGE	
SHEET 1 OF 2 SCALE 3:1 BY MM DATE 2/21/11		SYSTEM ERS v.2	ASSEMBLY 3" ERS
APPROVED DH		CHECKED DH	SIZE P/N D ERS-031 REV. 1